



Clippard's line of Delrin® head stainless steel cylinders offer all of the advantages of Clippard's high quality, reliable stainless steel cylinders, with the added benefit of corrosion resistance. These cylinders are ideal for applications where equipment cleanliness is critical, since they can be put to work in harsh environments requiring frequent use of hot water and chemicals.

Clippard corrosion resistant cylinders are available in bore sizes ranging from 5/8" to 1 1/2". Standard stroke lengths range from 1/2" to 6". The cylinder tubes and rods are made of stainless steel. The rods are ground, polished, and roller burnished. Buna-N® seals are standard with a Fluorocarbon option available for compatibility. A magnetic piston is also optional.

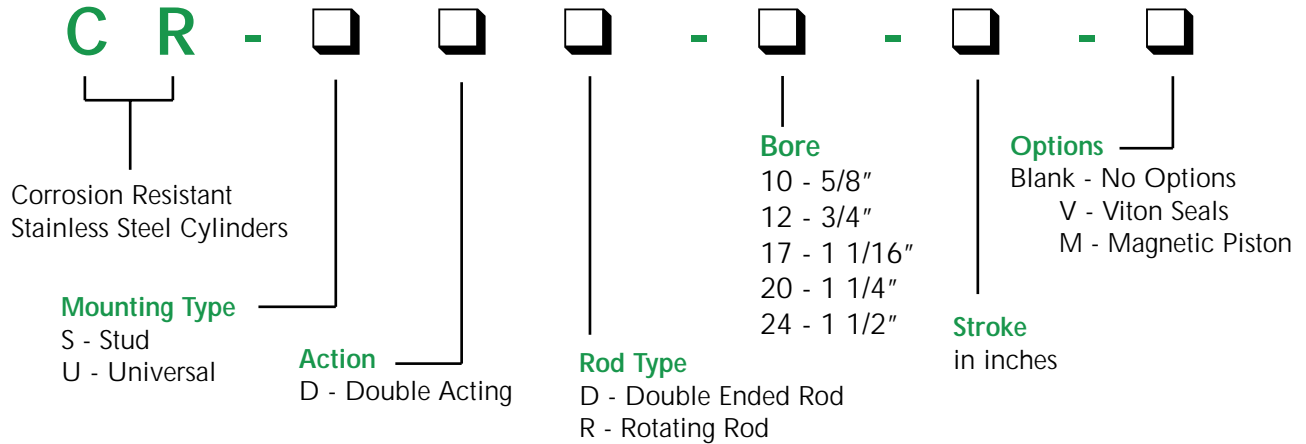
These lightweight cylinders have a temperature range from 32° F to 180° F, and have a pressure rating of 150 psig (air). A variety of mounting styles are available.

Delrin® is a registered trademark of E.I. DuPont Co.



# CORROSION RESISTANT CYLINDER

## NUMBERING SYSTEM



## Features

- Delrin® heads with a positive double seal
- Available with magnetic pistons
- 303 stainless steel ground, polished and roller burnished piston rods
- Precision rolled construction for a solid leakproof cylinder
- Buna-N seals (Fluorocarbon optional for compatibility only)
- 304 stainless steel tube
- Pressure Range 0 to 150 psig
- Temperature range: 32° to 180° F
- Optional stainless steel mounting nuts
- Aluminum alloy pistons, optional Delrin® pistons available; consult factory



# 5/8" BORE CORROSION RESISTANT CYLINDER



## CR-SDD-10-□-□

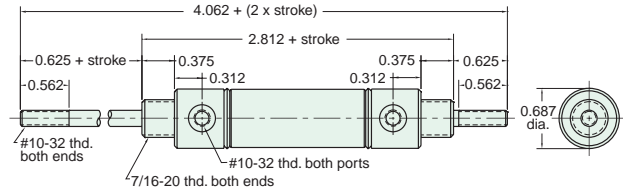
Double Acting

Mount: Stud  
Type: Double Rod

Standard Stroke Lengths: 1/2", 1", 1-1/2", 2", 3", 4"

Options: M, V, N, P2, P3, P4, P5, P6, P7, P8

For magnetic option add .312



Furnished without nut(s). Order Part No. N07-20-SS.

## CR-SDR-10-□-□

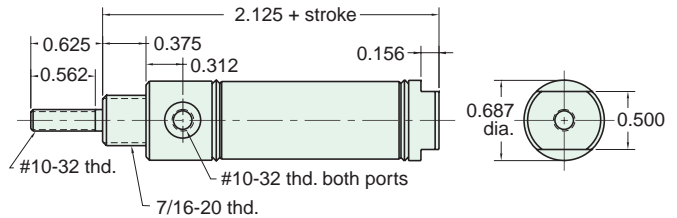
Double Acting

Mount: Stud  
Type: Rotating Rod

Standard Stroke Lengths: 1/2", 1", 1-1/2", 2", 3", 4"

Options: M, V, N

For magnetic option add .312



Furnished without nut(s). Order Part No. N07-20-SS.

## CR-UDR-10-□-□

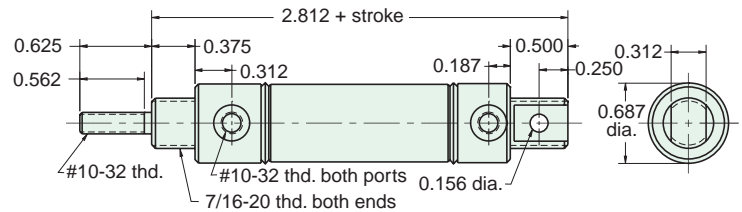
Double Acting

Mount: Universal  
Type: Rotating Rod

Standard Stroke Lengths: 1/2", 1", 1-1/2", 2", 3", 4"

Options: M, V, N, P2, P3, P4, P5, P6, P7, P8

For magnetic option add .312



Furnished without nut(s). Order Part No. N07-20-SS.

## Stainless Steel Mounting

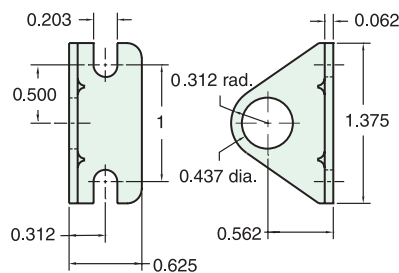
Foot Bracket

Model Number: FB-0892-SS

Nut

Model Number: N07-20-SS

Max. Torque in lbs.: 4.0





# 3/4" BORE CORROSION RESISTANT CYLINDER

## CR-SDD-12-□-□

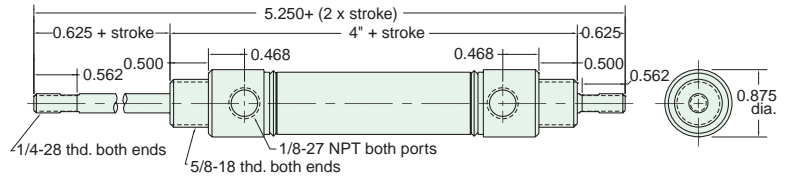
Double Acting

Mount: Stud  
Type: Double Rod

Standard Stroke Lengths: 1", 2", 3", 4", 5", 6"

Options: M, V, N, P2, P3, P4, P5, P6, P7, P8

For magnetic option add .312



Furnished without nut(s). Order Part No. N10-18-SS.

## CR-SDR-12-□-□

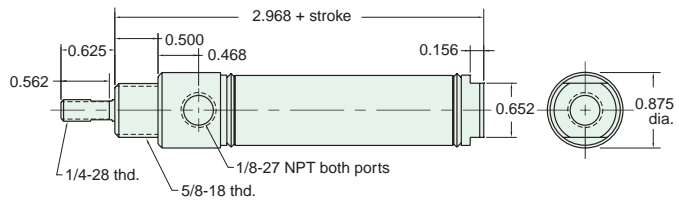
Double Acting

Mount: Stud  
Type: Rotating Rod

Standard Stroke Lengths: 1/2", 1", 1-1/2", 2", 3", 4", 5", 6"

Options: M, V, N, P6, P7, P8

For magnetic option add .312



Furnished without nut(s). Order Part No. N10-18-SS.

## CR-UDR-12-□-□

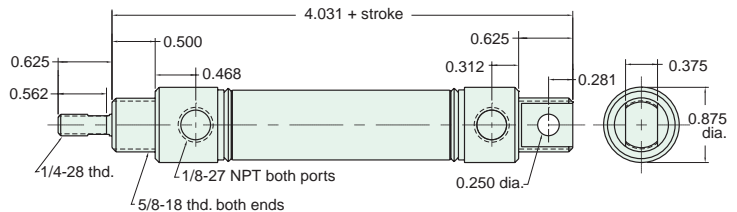
Double Acting

Mount: Stud  
Type: Rotating Rod

Standard Stroke Lengths: 1/2", 1", 1-1/2", 2", 3", 4", 5", 6", 8", 10", 12"

Options: M, V, N, P2, P3, P4, P5, P6, P7, P8

For magnetic option add .312

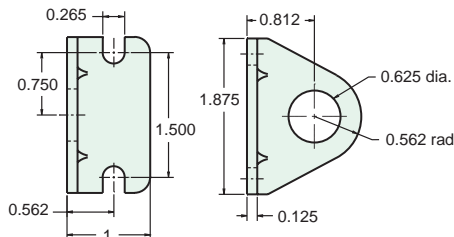


Furnished without nut(s). Order Part No. N10-18-SS.

## Stainless Steel Mounting

Foot Bracket  
Model Number: FB-1791-SS

Nut  
Model Number: N10-18-SS  
Max. Torque in lbs.: 12



# 1 1/16" BORE CORROSION RESISTANT CYLINDER



## CR-SDD-17-□-□

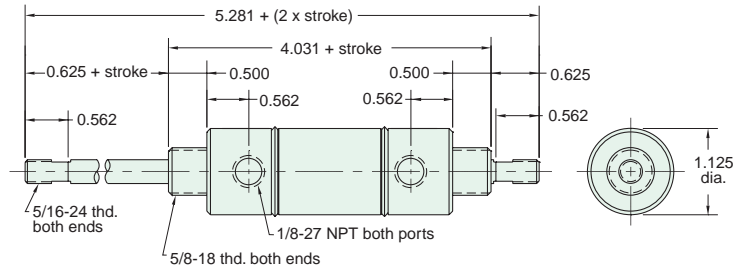
Double Acting



Mount: Stud  
Type: Double Rod

Standard Stroke Lengths: 1", 2", 3", 4", 5", 6"  
Options: M, V, N, P6, P7, P8

For magnetic option add .312



Furnished without nut(s). Order Part No. N10-18-SS.

## CR-SDR-17-□-□

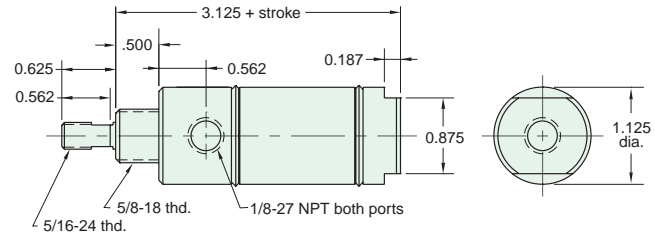
Double Acting



Mount: Stud  
Type: Rotating Rod

Standard Stroke Lengths: 1/2", 1", 1-1/2", 2", 3", 4", 5", 6"  
Options: M, V, N

For magnetic option add .312



Furnished without nut(s). Order Part No. N10-18-SS.

## CR-UDR-17-□-□

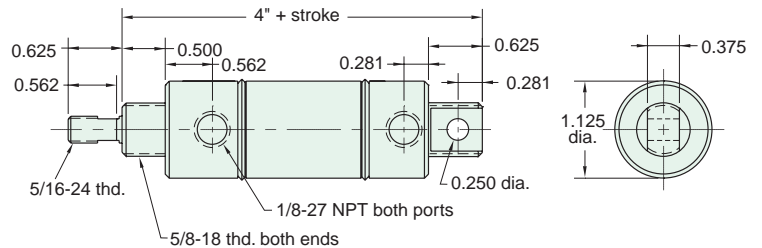
Double Acting



Mount: Stud  
Type: Rotating Rod

Standard Stroke Lengths: 1/2", 1", 1-1/2", 2", 3", 4", 5", 6",  
Options: M, V, N, P2, P3, P4, P5, P6, P7, P8

For magnetic option add .312

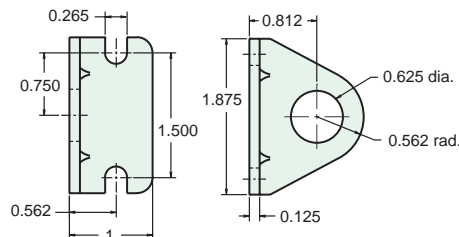


Furnished without nut(s). Order Part No. N10-18-SS.

## Stainless Steel Mounting

Foot Bracket  
Model Number: FB-1791-SS

Nut  
Model Number: N10-18-SS  
Max. Torque in lbs.: 12





# 1 1/4" BORE CORROSION RESISTANT CYLINDER

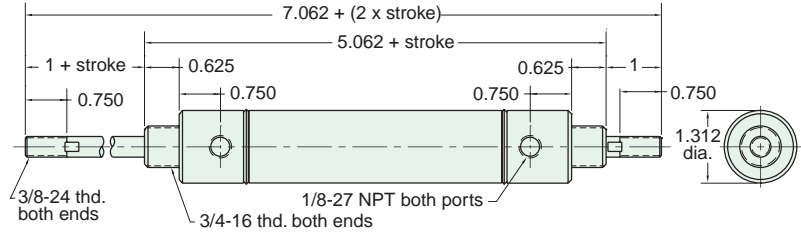
## CR-SDD-20-□-□

Mount: Stud  
Type: Double Rod

Standard Stroke Lengths: 1", 2", 3", 4", 5", 6"  
Options: M, V, N, P6, P7, P8

For magnetic option add .312

Double Acting



Furnished without nut(s). Order Part No. N12-16-SS.

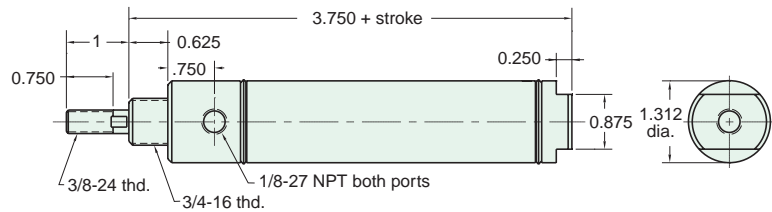
## CR-SDR-20-□-□

Mount: Stud  
Type: Rotating Rod

Standard Stroke Lengths: 1/2", 1", 1-1/2", 2", 3", 4", 5", 6"  
Options: M, V, N

For magnetic option add .312

Double Acting



Furnished without nut(s). Order Part No. N12-16-SS.

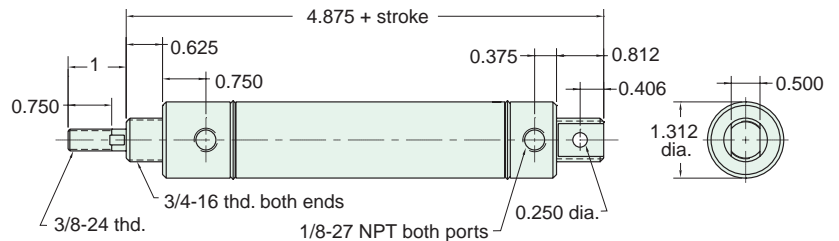
## CR-UDR-20-□-□

Mount: Universal  
Type: Rotating Rod

Standard Stroke Lengths: 1/2", 1", 1-1/2", 2", 3", 4", 5", 6", 8", 10", 12"  
Options: M, V, N, P2, P3, P4, P5, P6, P7, P8

For magnetic option add .312

Double Acting

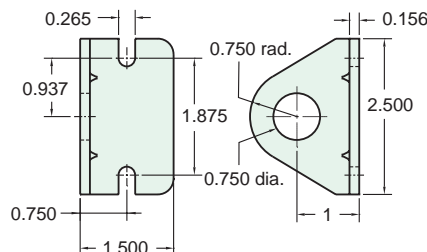


Furnished without nut(s). Order Part No. N12-16-SS.

## Stainless Steel Mounting

Foot Bracket  
Model Number: FB-2491-SS

Nut  
Model Number: N12-16-SS  
Max. Torque in lbs.: 20



# 1 1/2" BORE CORROSION RESISTANT CYLINDER



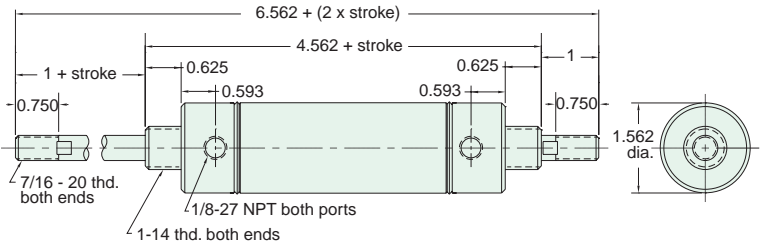
## CR-SDD-24-□-□

Double Acting

Mount: Stud  
Type: Double Rod

Standard Stroke Lengths: 1", 2", 3", 4", 5", 6", 8", 10", 12"  
Options: M, V, N, P6, P7, P8

For magnetic option add .312



Furnished without nut(s). Order Part No. N16-14-SS.

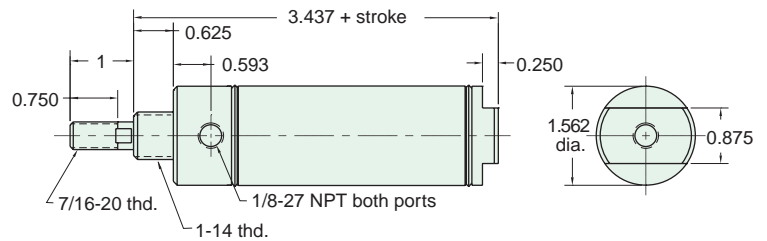
## CR-SDR-24-□-□

Double Acting

Mount: Stud  
Type: Rotating Rod

Standard Stroke Lengths: 1/2", 1", 1-1/2", 2", 3", 4", 5", 6"  
Options: M, V, N

For magnetic option add .312



Furnished without nut(s). Order Part No. N16-14-SS.

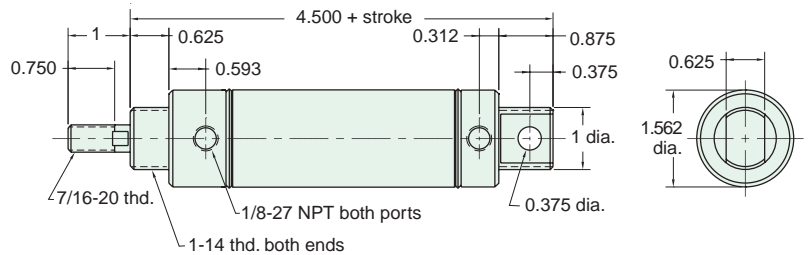
## CR-UDR-24-□-□

Double Acting

Mount: Universal  
Type: Rotating Rod

Standard Stroke Lengths: 1/2", 1", 1-1/2", 2", 3", 4", 5", 6", 8", 10", 12"  
Options: M, V, N, P2, P3, P4, P5, P6, P7, P8

For magnetic option add .312

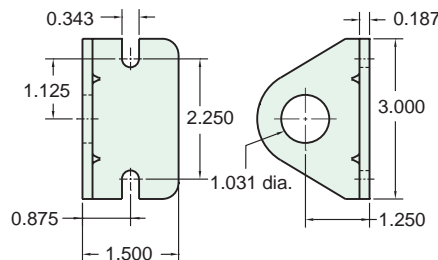


Furnished without nut(s). Order Part No. N16-14-SS.

## Stainless Steel Mounting

Foot Bracket  
Model Number: FB-2891-SS

Nut  
Model Number: N16-14-SS  
Max. Torque in lbs.: 30

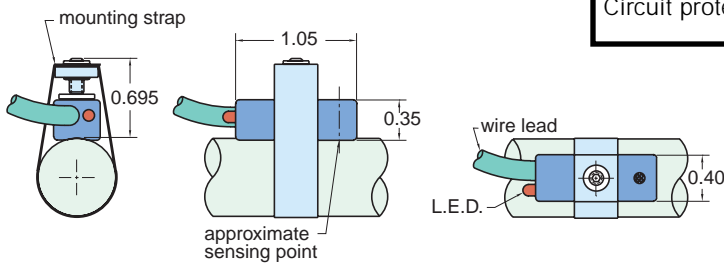




# POSITION SENSORS

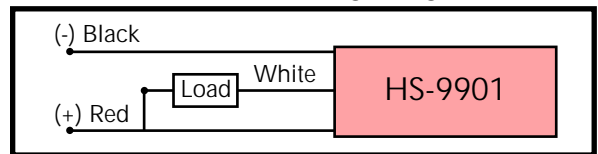
## HS-9901

Hall Effect Sensor



Output type	Sinking (open collector output)
Input voltage (Vin)	5 to 28 VDC
Operation temp.	0 to 185°F
Input current (Iin)	25 mA maximum
Output voltage drop	0.4 VDC maximum
Output current (Iout)	Iout = 0.3 Vin, 300 mA maximum
Power dissipation	300 mW maximum
Lead Wire	22 ga. x 4 ft. also avail. in 12 ft. length HS-9901-12
Circuit protection	Reverse polarity protected, transient voltage protected and false pulse protected.

### Hall Effect Wiring Diagram

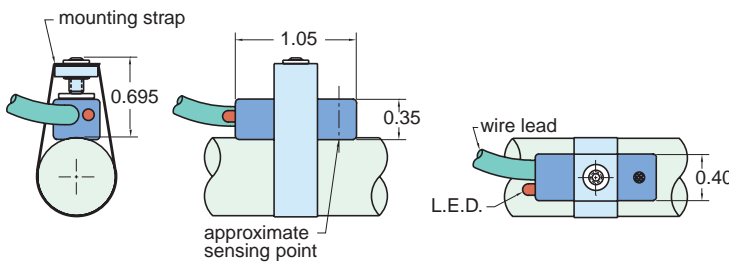
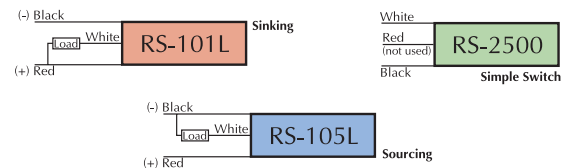


## RS-

Magnetic Reed Switch

RS-101L • RS-105L • RS-2500

### Circuit Diagram



Part Number	RS-101L	RS-105L	RS-2500
Output Type	Sinking	Sourcing	Simple Switch
Power Range	10w		25w
Supply Voltage	3 to 36 VAC or VDC		220 VAC or VDC
Current Range	1.0 A max.		
LED	Provided	Provided	Not Provided
Lead Wire	22 ga. x 4 ft.		
Operating Temp.	0 to 300°		
Rated Life	10,000,000 cycles		
Housing	molded plastic		
Response Time	1 mSec		
Switching Logic	SPST normally open		

■ RS-101L & RS-105L

■ RS-101L, RS-105L & RS-2500

RS-2500 pictured

## Universal Clamps

SC-08 • SC-10 • SC-12 • SC-14 • SC-17 • SC-20  
SC-24 • SC-28 • SC-32 • SC-40 • SC48



Clippard's stainless steel clamps are designed to be used with the Hall Effect and the reed switch. All clamps should be ordered based upon the size of the cylinder on which it will be mounted. The part numbers show the bore size using the numerical code. Each clamp is 3/8" wide stainless steel, and is equipped with a locking screw with #5-40 threads.