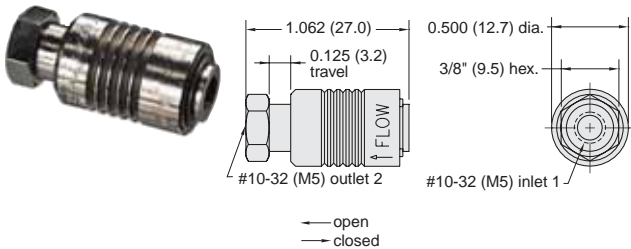




## 2 Position 2-Way or 3-Way Sleeve Valves



**Medium:** Air

**Mounting:** Inline or direct to fitting

**Stem Travel:** 1/8" (3.2)

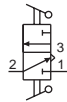
**Material:** Nickel plated brass

**Input Pressure:** 150 psig/10 bar max.

**Air Flow:** 6.5 SCFM @ 50 psig; 11.8 SCFM @ 100 psig; 280 l/min @ 6 bar

**Force to Actuate:** Approx. 2.5 lbs

| Part No.           | Description                           |
|--------------------|---------------------------------------|
| SLV-2 . . . . .    | 2 Position 2-Way Sleeve Valve, #10-32 |
| SLV-2-M5 . . . . . | 2 Position 2-Way Sleeve Valve, M5     |
| SLV-3 . . . . .    | 2 Position 3-Way Sleeve Valve, #10-32 |
| SLV-3-M5 . . . . . | 2 Position 3-Way Sleeve Valve, M5     |



## J-Series Sleeve Valves

### Features

- Variety of inlet and outlet porting eliminates fittings
- No cross-over between inlet and exhaust ports
- Corrosion resistant electroless nickel plated brass body
- Anodized aluminum sleeve for corrosion resistance
- Smooth operation, low sliding friction
- Buna-N seals; (Fluorocarbon available)

Clippard J-Series sleeve valves with 1/8" NPT and 1/4" NPT ports offer large flow capability with a relatively short stroke in 2-way and 3-way valves, and no cross-over between inlet and exhaust on the 3-way models.

The JSLV-2 2-way valve and the JSLV-3 3-way valve combine high flow with small size. Unlike ball valves, sleeve valves require no space for a handle. They also provide flexibility in pipe connections and are available with either male or female threads or combinations of both.

The JSLV-2 and JSLV-3 valves feature a smooth opening stroke during which inlet air is directed to the outlet. During the closing stroke, in the opposite direction of travel, the outlet is closed from the inlet and in the JSLV-3 version, the outlet is then exhausted to atmosphere without the inlet ever being connected to exhaust.

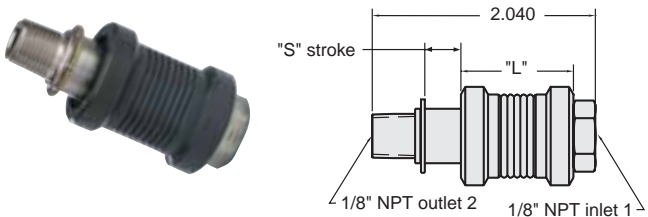
**Medium:** Air, Water or Oil

**Force to Actuate:** Approx. 8 lbs

**Input Pressure:** 150 psig max.

**Mounting:** Inline or direct to fitting

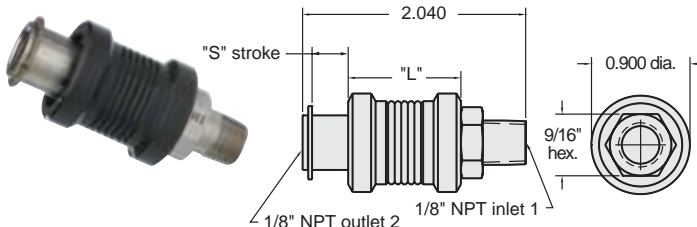
## 2-Way or 3-Way Sleeve Valves



**Air Flow:** 1/8" NPT: 43 SCFM @ 100 psig

| Order No.             | Type  | Inlet           | "L"    | "S"    |
|-----------------------|-------|-----------------|--------|--------|
| JSLV-2-F2M2 . . . . . | 2-Way | 1/8 Female Pipe | 1.155" | 0.260" |
| JSLV-3-F2M2 . . . . . | 3-Way | 1/8 Female Pipe | 1.030" | 0.385" |

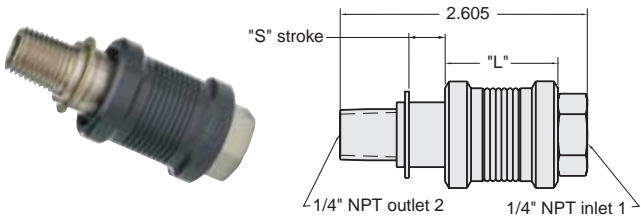
## 2-Way or 3-Way Sleeve Valves



**Air Flow:** 1/8" NPT: 43 SCFM @ 100 psig

| Order No.             | Type  | Inlet         | "L"    | "S"    |
|-----------------------|-------|---------------|--------|--------|
| JSLV-2-M2F2 . . . . . | 2-Way | 1/8 Male Pipe | 1.155" | 0.260" |
| JSLV-3-M2F2 . . . . . | 3-Way | 1/8 Male Pipe | 1.030" | 0.385" |

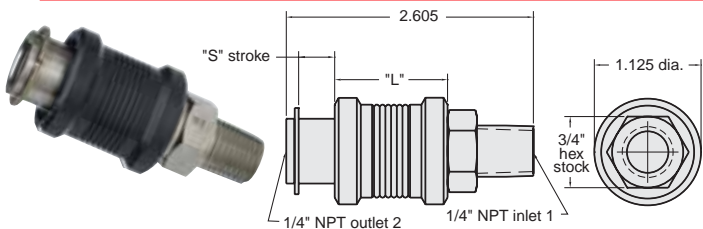
## 2-Way or 3-Way Sleeve Valves



**Air Flow:** 1/4" NPT: 70 SCFM @ 100 psig

| Order No.             | Type  | Inlet           | "L"    | "S"    |
|-----------------------|-------|-----------------|--------|--------|
| JSLV-2-F4M4 . . . . . | 2-Way | 1/4 Female Pipe | 1.325" | 0.305" |
| JSLV-3-F4M4 . . . . . | 3-Way | 1/4 Female Pipe | 1.190" | 0.460" |

## 2-Way or 3-Way Sleeve Valves



**Air Flow:** 1/4" NPT: 70 SCFM @ 100 psig

| Order No.             | Type  | Inlet         | "L"    | "S"    |
|-----------------------|-------|---------------|--------|--------|
| JSLV-2-M4F4 . . . . . | 2-Way | 1/4 Male Pipe | 1.325" | 0.305" |
| JSLV-3-M4F4 . . . . . | 3-Way | 1/4 Male Pipe | 1.190" | 0.460" |