

# STAINLESS STEEL METRIC CYLINDERS



Clippard's metric cylinders offer all of the advantages of Clippard's high quality, reliable stainless steel cylinders—available with metric threads. Five bore sizes ranging from 8 mm to 25 mm with stroke lengths of 10 mm to 160 mm are offered.

## Features

- Polished I.D. 304 stainless steel tubes for low breakaway provides smooth action
- Typical breakaway less than 1/2 bar
- Precision double rolled construction for solid, leak-proof cylinders
- Sintered bronze rod bushing reduces wear and friction
- Sintered bronze clevis bushing on all clevis mount cylinders means less wear
- Rods are threaded and bonded to pistons
- Ground, polished, and roller burnished 303 stainless steel rod saves seal wear
- Full piston area breakaway to assure full power from the beginning of each stroke
- Buna-N "U" cup piston and rod seals for reliable leak-free operation
- Temperature range: -35° to 110°C
- Maximum pressure of 17 bar

## Options

B = Bumpers

V = Viton Seals

Nominal Bore Size	8 mm	12 mm	16 mm	20 mm	25 mm
Actual Bore Size	7.9 mm	12.7 mm	15.9 mm	19.1 mm	26.9 mm
Series Number*	05	08	10	12	17
Rod Diameter	3.1 mm	4.8 mm	4.8 mm	6.4 mm	7.9 mm
Rod Thread	M3 x 0.5	M4 x 0.7	M4 x 0.7	M6 x 1.0	M8 x 1.25
Mounting Thread	M10 x 1.25	M12 x 1.25	M12 x 1.25	M16 x 1.5	M16 x 1.5
Port Size	M5	M5	M5	M5	G1/8
(Optional)				(R1/8)	(R1/8)
Spring Force (SSR & USR)	4.4 N	8.9 N	17.8 N	26.7 N	31.1 N
Clevis Pin Diameter	4 mm	4 mm	4 mm	8 mm	8 mm
Clevis Width	4 mm	8 mm	8 mm	10 mm	10 mm



# 8 MM BORE STAINLESS STEEL METRIC CYLINDER

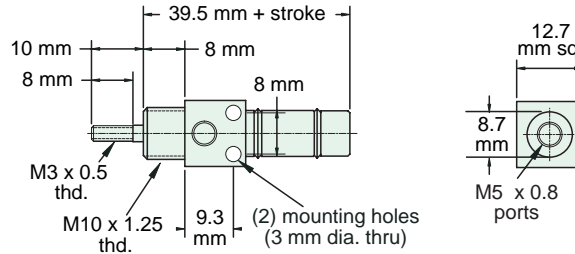
## M-SDR-05-□-□

Double Acting



**Mount:** Stud  
**Type:** Rotating Rod  
**Options:** B, V

**Standard Stroke Lengths:** 10 mm, 25 mm, 40 mm, 50 mm, 80 mm, 100 mm



Nut included, but not shown on drawing

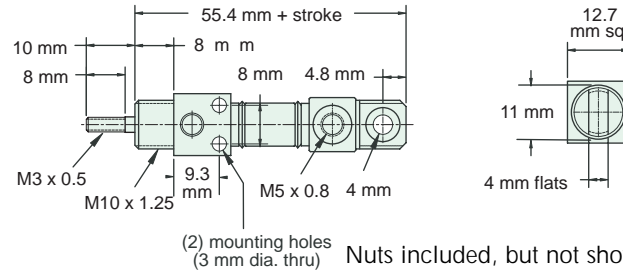
## M-UDR-05-□-□

Double Acting



**Mount:** Universal  
**Type:** Rotating Rod  
**Options:** B, V

**Standard Stroke Lengths:** 10 mm, 25 mm, 40 mm, 50 mm, 80 mm, 100 mm



Nuts included, but not shown on drawing

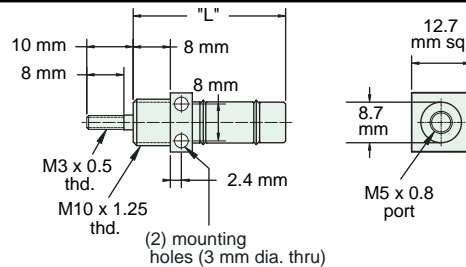
## M-SSR-05-□-□

Single Acting



**Mount:** Stud  
**Type:** Rotating Rod  
**Options:** B, V

**Standard Stroke Lengths:** 10 mm, 25 mm, 40 mm, 50 mm, 80 mm, 100 mm



Nut included, but not shown on drawing

"L" (mm) for Standard Strokes						
Stroke	10	25	40	50	80	100
	46	68	95	105	154	181

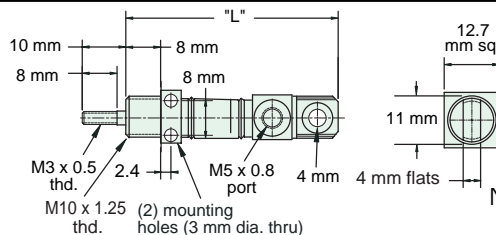
## M-USR-05-□-□

Single Acting



**Mount:** Universal  
**Type:** Rotating Rod  
**Options:** B, V

**Standard Stroke Lengths:** 10 mm, 25 mm, 40 mm, 50 mm, 80 mm, 100 mm



Nuts included, but not shown on drawing

"L" (mm) for Standard Strokes						
Stroke	10	25	40	50	80	100
	62	83.5	111	121	170	197

# 12 MM BORE STAINLESS STEEL METRIC CYLINDER

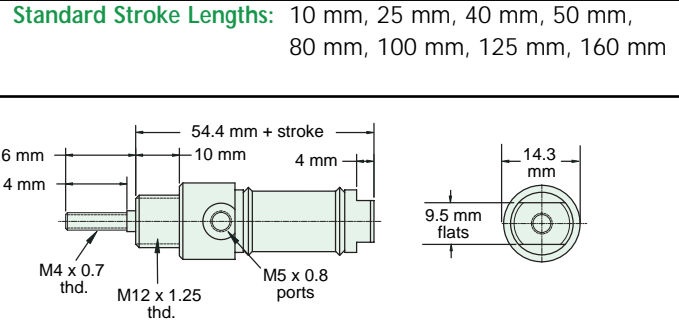


## M-SDR-08-□-□

Double Acting



**Mount:** Stud  
**Type:** Rotating Rod  
**Options:** B, V



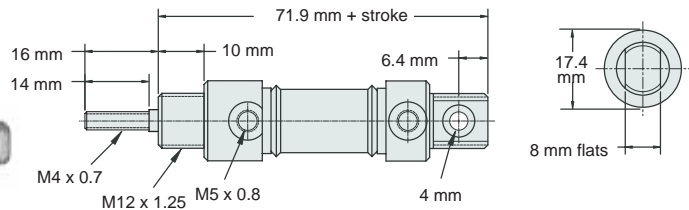
Nut included, but not shown on drawing

## M-UDR-08-□-□

Double Acting



**Mount:** Universal  
**Type:** Rotating Rod  
**Options:** B, V



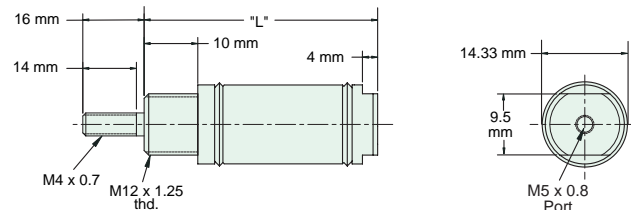
Furnished without nut(s). Order Part No. NM10-125.

## M-SSR-08-□-□

Single Acting



**Mount:** Stud  
**Type:** Rotating Rod  
**Options:** B, V



Nut included, but not shown on drawing

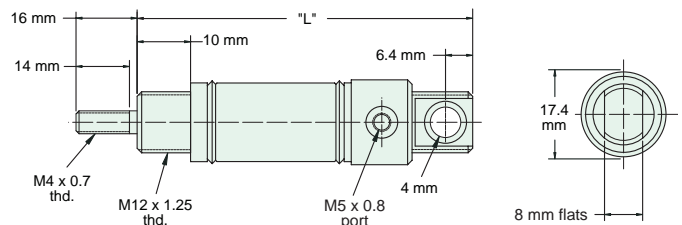
"L" (mm) for Standard Strokes						
Stroke	10	25	40	50	80	100
	56	83	120	130	193	224

## M-USR-08-□-□

Single Acting



**Mount:** Universal  
**Type:** Rotating Rod  
**Options:** B, V



Furnished without nut(s). Order Part No. NM10-125.

"L" (mm) for Standard Strokes						
Stroke	10	25	40	50	80	100
	73	100	137	141	210	241



# 16 MM BORE STAINLESS STEEL METRIC CYLINDER

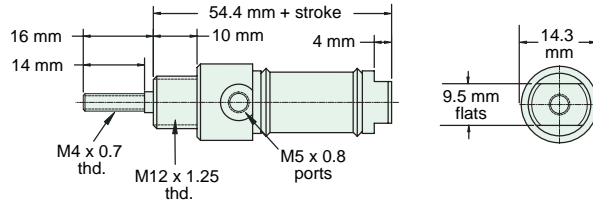
## M-SDR-10-□-□

Double Acting



**Mount:** Stud  
**Type:** Rotating Rod  
**Options:** B, V

**Standard Stroke Lengths:** 10 mm, 25 mm, 40 mm, 50 mm, 80 mm, 100 mm, 125 mm, 160 mm, 200 mm, 250 mm



Nut included, but not shown on drawing

## M-UDR-10-□-□

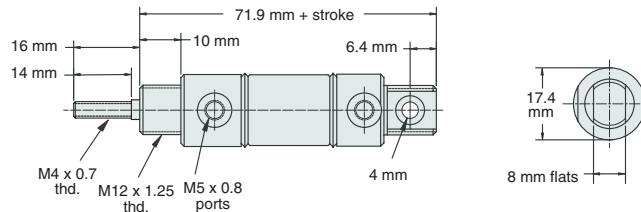
Double Acting



**Mount:** Universal  
**Type:** Rotating Rod  
**Options:** B, V

**Standard Stroke Lengths:** 10 mm, 25 mm, 40 mm, 50 mm, 80 mm, 100 mm, 125 mm, 160 mm, 200 mm, 250 mm

Mounting nuts not included. Part No. NM12-125 may be ordered separately.



Furnished without nut(s). Order Part No. NM12-125.

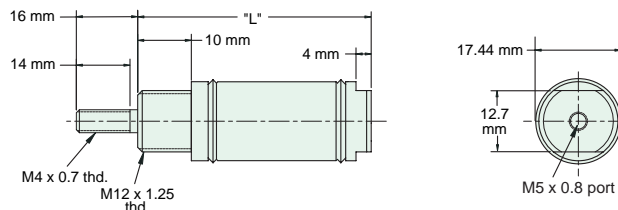
## M-SSR-10-□-□

Single Acting



**Mount:** Stud  
**Type:** Rotating Rod  
**Options:** B, V

**Standard Stroke Lengths:** 10 mm, 25 mm, 40 mm, 50 mm, 80 mm, 100 mm, 125 mm, 160 mm



Nut included, but not shown on drawing

"L" (mm) for Standard Strokes								
Stroke	10	25	40	50	80	100	125	160
	56	83	120	130	193	224	260	329

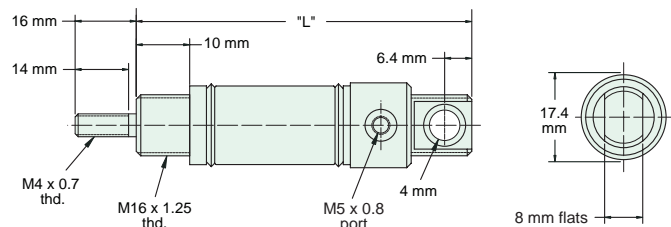
## M-USR-10-□-□

Single Acting



**Mount:** Universal  
**Type:** Rotating Rod  
**Options:** B, V

**Standard Stroke Lengths:** 10 mm, 25 mm, 40 mm, 50 mm, 80 mm, 100 mm, 125 mm, 160 mm



Furnished without nut(s). Order Part No. NM12-125.

"L" (mm) for Standard Strokes								
Stroke	10	25	40	50	80	100	125	160
	73	100	137	141	210	241	278	346

# 20 MM BORE STAINLESS STEEL METRIC CYLINDER

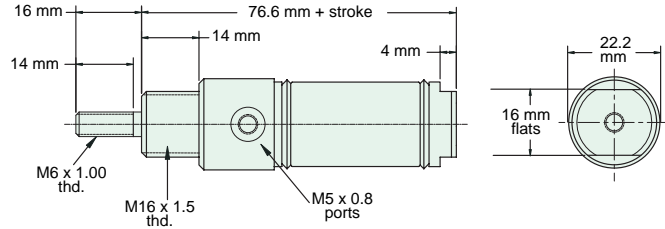


## M-SDR-12-□-□

Double Acting



**Mount:** Stud **Standard Stroke Lengths:** 10 mm, 25 mm, 40 mm, 50 mm, 80 mm, 100 mm, 125 mm, 160 mm, 200 mm, 250 mm, 300 mm, 350 mm, 400 mm, 450 mm, 500 mm, 550 mm, 600 mm  
**Type:** Rotating Rod  
**Options:** B, R, V



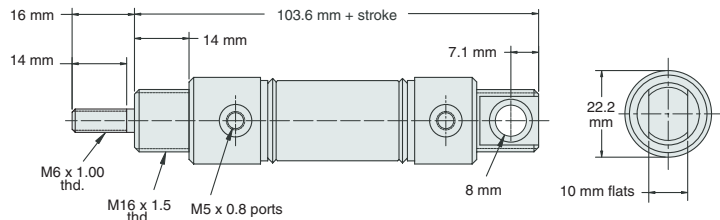
Nut included, but not shown on drawing

## M-UDR-12-□-□

Double Acting



**Mount:** Universal **Standard Stroke Lengths:** 10 mm, 25 mm, 40 mm, 50 mm, 80 mm, 100 mm, 125 mm, 160 mm, 200 mm, 250 mm, 300 mm, 350 mm, 400 mm, 450 mm, 500 mm, 550 mm, 600 mm  
**Type:** Rotating Rod  
**Options:** B, R, V



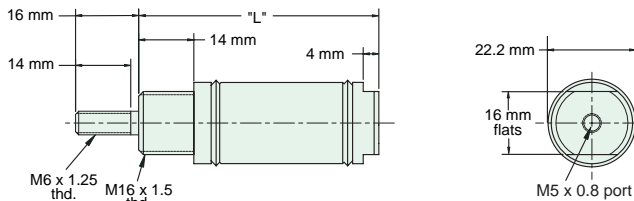
Furnished without nut(s). Order Part No. NM16-150.

## M-SSR-12-□-□

Single Acting



**Mount:** Stud **Standard Stroke Lengths:** 10 mm, 25 mm, 40 mm, 50 mm, 80 mm, 100 mm, 125 mm, 160 mm  
**Type:** Rotating Rod  
**Options:** B, R, V



Nut included, but not shown on drawing

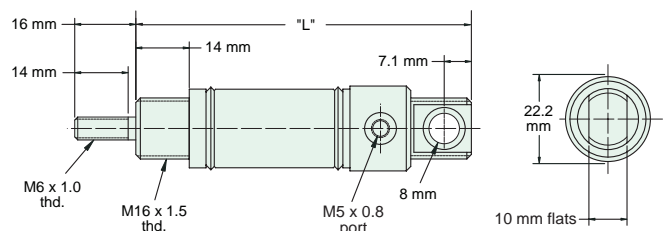
"L" (mm) for Standard Strokes								
Stroke	10	25	40	50	80	100	125	160
	68	83	116	126	191	211	254	324

## M-USR-12-□-□

Single Acting



**Mount:** Universal **Standard Stroke Lengths:** 10 mm, 25 mm, 40 mm, 50 mm, 80 mm, 100 mm, 125 mm, 160 mm  
**Type:** Rotating Rod  
**Options:** B, R, V



Furnished without nut(s). Order Part No. NM16-150.

"L" (mm) for Standard Strokes								
Stroke	10	25	40	50	80	100	125	160
	95	110	143	153	218	238	281	351



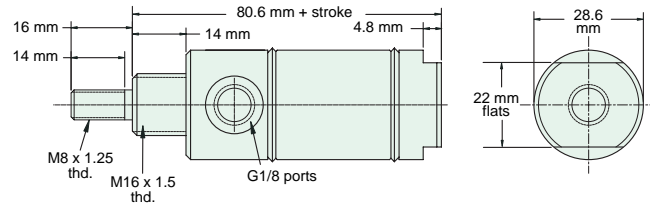
# 25 MM BORE STAINLESS STEEL METRIC CYLINDER

## M-SDR-17-□-□

Double Acting



**Mount:** Stud **Standard Stroke Lengths:** 10 mm, 25 mm, 40 mm, 50 mm, 80 mm, 100 mm, 125 mm, 160 mm  
**Type:** Rotating Rod  
**Options:** B, R, V



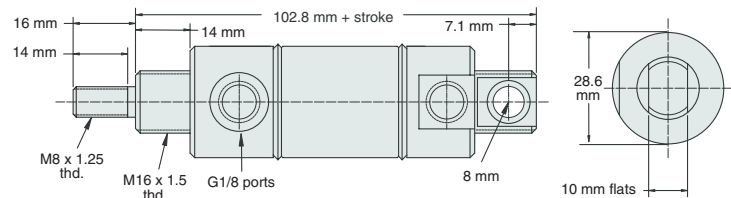
Nut included, but not shown on drawing

## M-UDR-17-□-□

Double Acting



**Mount:** Universal **Standard Stroke Lengths:** 10 mm, 25 mm, 40 mm, 50 mm, 80 mm, 100 mm, 125 mm, 160 mm  
**Type:** Rotating Rod  
**Options:** B, R, V



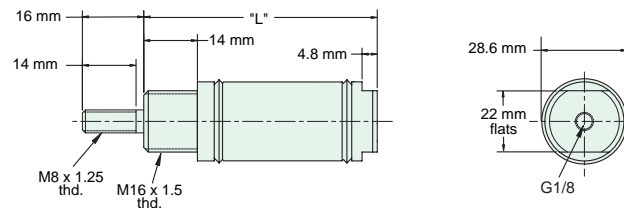
Furnished without nut(s). Order Part No. NM16-150.

## M-SSR-17-□-□

Single Acting



**Mount:** Stud **Standard Stroke Lengths:** 10 mm, 25 mm, 40 mm, 50 mm, 80 mm, 100 mm, 125 mm, 160 mm  
**Type:** Rotating Rod  
**Options:** B, R, V



Nut included, but not shown on drawing

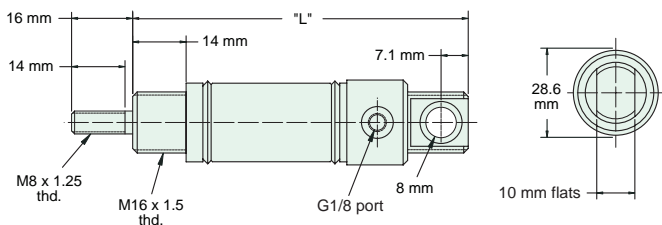
"L" (mm) for Standard Strokes								
Stroke	10	25	40	50	80	100	125	160
	75	90	120	129	188	208	247	311

## M-USR-17-□-□

Single Acting



**Mount:** Universal **Standard Stroke Lengths:** 10 mm, 25 mm, 40 mm, 50 mm, 80 mm, 100 mm, 125 mm, 160 mm  
**Type:** Rotating Rod  
**Options:** B, R, V



Furnished without nut(s). Order Part No. NM16-150.

"L" (mm) for Standard Strokes								
Stroke	10	25	40	50	80	100	125	160
	97	112	142	151	210	230	269	333